



United States Department of the Interior

FISH AND WILDLIFE SERVICE
San Francisco Bay National Wildlife Refuge Complex
9500 Thornton Avenue
Newark, California 94560



March 17, 2009

Lt. Colonel Laurence Farrell
Commander
U.S. Army Corps of Engineers
San Francisco District
1455 Market Street, 17th Floor
San Francisco, CA. 94103-1398

Attention: Jane Hicks
Chief, Regulatory Branch

Paula Gill
Project Manger

Mr. William Travis
Executive Director
San Francisco Bay Conservation and Development Commission
50 California Streets, Suite 2600
San Francisco, CA. 94111

Attention: Max Delany
Coastal Permit Analyst

Subject: U.S. Fish and Wildlife Service Proposed Maintenance Report
COE File: 2008-00103S
BCDC Consistency Determination No. CN 10-03:

Dear Lt. Col. Kiley and Mr. Travis:

Enclosed is U.S. Fish and Wildlife Service (FWS) first report of proposed maintenance activities under the new 10 year permit issued in 2009 as required by our Army Corps of Engineers (ACOE) permit and San Francisco Bay Conservation and Development Commission (BCDC) Consistency Determination. This report covers the maintenance construction period of June 1, 2009 to May 31, 2010.

The Refuge is reporting for the Alviso salt pond system A1 – A21 (excluding Ponds A4, and A18). As part of Cargill's continuing obligations under the conveyance agreement, as required by the Phase Out Agreement, Cargill will be responsible for reporting their maintenance activities for areas still operated by Cargill (Mowry and Newark systems).

Summary:

The FWS has been operating Alviso Ponds A1 – A8 since July 2004, and Alviso Ponds A9-A17 since April 2005 with all water control structures, levees, weirs, trash racks, and pumps in place and operational. On September 26, 2005 the FWS assumed all maintenance obligations for the Island Ponds (A19, A20, and A21) and will be responsible for their operations. Cargill still has operational responsibilities for Alviso Ponds A22 and A23 until all requirements are met in the Phase out Agreement. Cargill donated Pond SF2 to the Refuge in 2007, and the Refuge assumes all operation and maintenance of the Pond. In 2008, the Phase Out agreement for the Ravenswood Ponds was completed and the FWS now has operational responsibilities for Ponds R1, R2, R3, R4, R5, and SR5.

The Phase I activities for the South Bay Salt Pond Restoration Project have been authorized under their own permits and Consistency Determination.

Proposed Maintenance: 2009 June 1 through 2010 May 31

Project 2009-1

In conjunction with the Santa Clara Valley Water District (SCVWD), the FWS will be using import fill for levee maintenance from the SCVWD stream bed sediment removal project. Approximately 7500 cubic yards will be trucked and placed on the interior side of the levee by the SCVWD at Ponds A8S. This will replace material that has eroded during wind and wave action (*see exhibit A*). The material being hauled in has been approved by the Regional Water Quality Control Board for wetland re-use. The maintenance depends on when SCVWD is able to start their stream bed removal, but will most likely occur in September.

Purpose:

As part of the SCVWD stream bed sediment removal project, every year the SCVWD has excess material that needs to be disposed of. The FWS has agreed to take this excess material for levee repair as long as it passes certain wetland criteria set by the RWQCB. SCVWD in turn will place the material in designated levee areas that the FWS has determined to need repairs. Pond A8S has shown interior levee damage caused from overtopping of the south levee. This repair will stabilize the levee from breaching.



2008 Disposal Area

May extend 2008 area by another 200 feet West and 100 feet East

Exhibit A: Proposed Truck Route and Disposal Area

If Gold Street is closed for work on rail road track or other events, trucks will exit using the same road used to enter work area

Project 2009-2

On Pond A14 system, levees will be repaired using a dragline that sits atop a floating barge. The barge will be trucked in via levees, and placed in the pond. No dredge locks will be used during this operation. All material for levee repair will be from local borrow; no import fill will be brought in for this operation.

The tentative schedule is to begin in late May and continue for 6 weeks. The barge will be placed in Pond A13, then begin work on the west side levee of A13 (*see exhibit B*). There will be 3 breaches in the Pond system in order for the barge to access the system. Two of the breaches will be left as a gap in the levee to provide for better water circulation, and the third breach (located between Ponds A13/A14) will be backfilled and closed upon completion of the repairs. Wave break erosion islands will also be created for preventive maintenance against erosion along the levees.

Work to be done in Pond system A14:

1. Pond A13 – beaching along 1,300 linear ft. of west side levee
2. Pond A13 – creating wave break islands on west side of pond 1,262 linear ft.

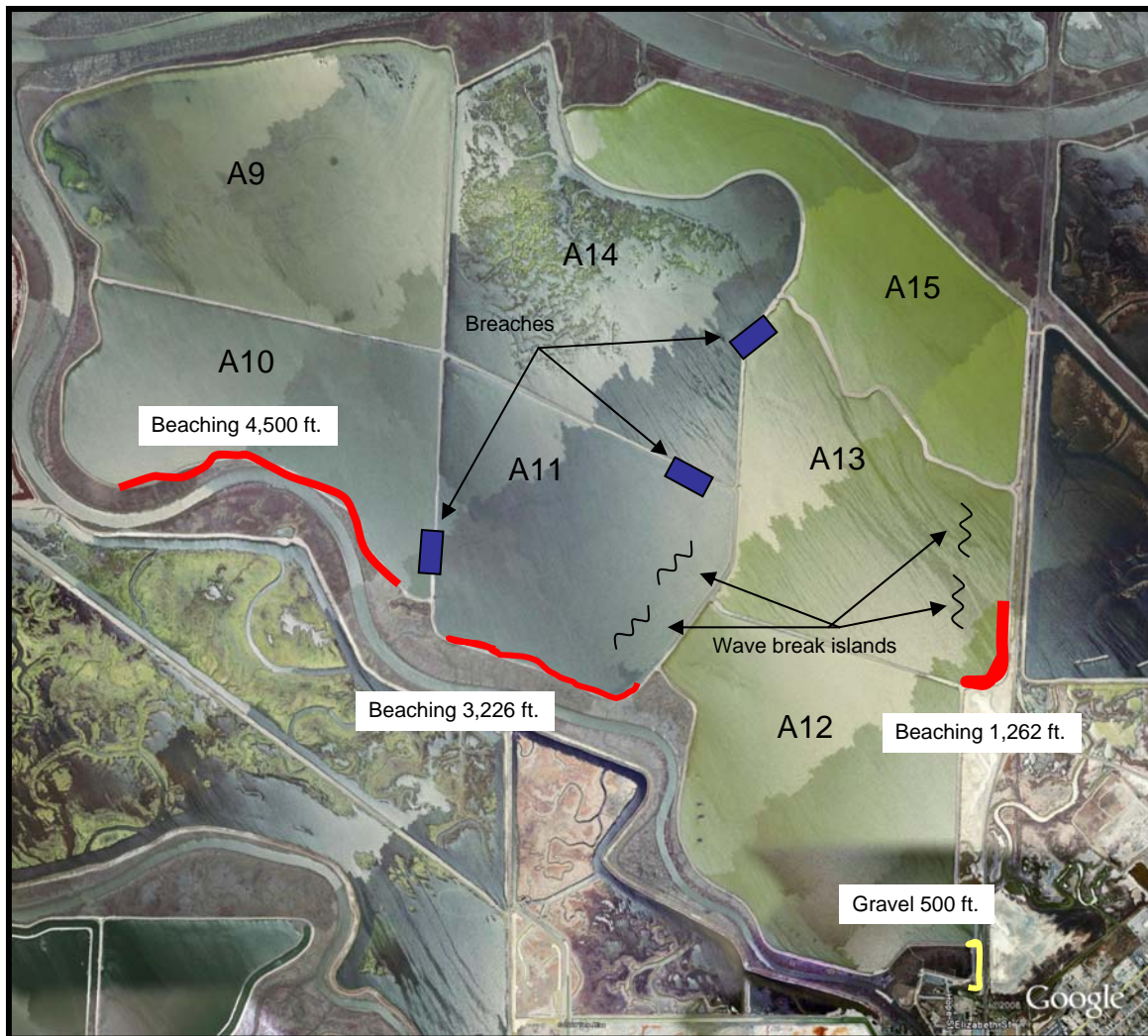
San Francisco Bay Conservation and Development Commission Consistency Determination

3. Pond A10 – beaching along 4,500 linear ft.
4. Pond A11 – beaching along 3,200 linear ft.
5. Pond A11 – creating wave break islands on west side of pond 3,226 linear ft
6. Install 500 linear ft. of crushed rock on levee from Alviso Marina to SE corner of Pond A12

Purpose:

Pond System A14 has not had any major repairs since the property was acquired from Cargill in 2003. Several areas of levee are eroding due to wind and wave action and these areas have become priority for repair. Areas of the external levee are beginning to shear wall, and beaching will be placed on the sides of the levee to repair them. Island wave breaks will be created to slow the erosions to parts of the levee that historically are located on the windward side. All the material will come from the interior parts of the pond (borrow pits) for the beaching and to create the island wave breaks.

Exhibit B



Project 2009-3

Pond R1 of the Ravenswood unit has historically needed the most repairs of any levee in the entire system. When Cargill operated this system, the exterior levee would need repairs yearly. The FWS has taken over operation and maintenance of the Ravenswood unit in 2008, and plan to continue maintaining the exterior levee until a more economic and appropriate levee can be constructed. For 2009, the FWS plan to repair approximately 1,000 linear ft. of levee with 700 cubic yards of rip rap. All of the operations will be using land based equipment to haul and place material on site. This proposed work will begin in the summer of 2009 (see *Exhibit C*).

Exhibit C



Purpose:

In 2008, Cargill added rip rap to this area to protect the levee from wind and wave erosion. During this past winter, the area has had the recent installation of rip rap pulled away from the levee and exposing it to erosion. FWS will install rip rap to prevent further erosion.

U.S. Fish and Wildlife Service Operation and Maintenance Plan
Army Corp of Engineers Permit 2008-00103S
San Francisco Bay Conservation and Development Commission Consistency Determination

The rest of the FWS 2009 – 2010 proposed maintenance plan includes routine maintenance of levees with filling in the low spots, minor rip-rapping of certain problem areas if needed, maintenance of water control structures, maintenance of hunt blinds, and the grading of levee tops for vehicle access. All of our proposed work is summarized by Pond Systems below and in attached tables:

Please feel free to contact me at (510) 792-0222 with any questions regarding this report.

Sincerely,



Enclosures
cc.: Maintenance Table
cc: Distribution List

Eric Mruz
Refuge Manager
Don Edwards San Francisco Bay
National Wildlife Refuge

U.S. Fish and Wildlife Service Work Plan
 San Francisco District Corps of Engineers Permit 2008-00103S
 San Francisco Bay Conservation and Development Commission Consistency Determination

Alviso Ponds A1 - A21 and Ravenswood Ponds R1-SR5							
Task No.	Ponds Involved	Activity1 / Function	Duration of Activity	COE2	BCDC2	Size/Scope	Comments
Yearly	All Ponds	Grading	Ongoing May thru Oct	N/A	2b		Routine grading of levee top to provide vehicle access. When present, grading will not occur in active WSP/seabird nesting areas.
Yearly	AB1, AB2, A3W, A5/ A7, A3N, A8N	Public Access	Ongoing May thru Oct	1d	2b	10' x 15'	Reconstruct hunting blinds for annual Duck Hunting Program.
Yearly	All Ponds	General levee maintenance	Ongoing May thru Oct	1a	2a		Repair and Maintenance of existing water control structures as needed.
Yearly	All Ponds	General levee maintenance	Ongoing thru Oct	N/A	2a	1,000 lf / 900 cy	Build up low areas as needed on levee with land based equipment.
2009-1	A8	General levee maintenance	September	2a	2a	500 lf / 7500 cy	Repair levee with land based equipment
2009-2	Pond A14 system	General levee maintenance	Ongoing	2a	2a	4250 lf	Repair eroded areas on internal levee using land-based equipment.
2009-3	R1	Rip-rap	Summer 2009	1c	1b	1,000 lf / 700 cy	Maintenance of existing rip-rap on exterior levee

Work that has been completed
Work is performed yearly as part of routine operation and maintenance

*Note : Task No. refers to year work was submitted

MAINTENANCE REPORT DISTRIBUTION LIST

Bob Power
Santa Clara Valley Audubon Society
22221 McClellan Road
Cupertino, CA. 95014

Mr. Max Delaney
Coastal Program Analyst
SF Bay Conservation & Development Commission
50 California Street, Suite 2600
San Francisco, CA. 94111

Gary Stern
NOAA
777 Sonoma Avenue, Room 325
Santa Rosa, CA. 95404

Mr. Steve Willoughby
Pacific Gas & Electric
2730 Gateway Oaks Dr. Suite 220
Sacramento, CA. 95833

Andree Greenberg
San Francisco Bay Regional Water
Quality Control Board
1515 Clay St. Suite 1400
Oakland ,CA, 94612

Mr. Davis J. Chesterman
Manager: Project Development Group
Santa Clara Valley Water District
5750 Almaden Expressway
San Jose, CA. 95118-3686

Kevin Consey
Chief Operating Officer
Golden Gate Audubon Society
2350 San Pablo Avenue, Suite G
Berkeley, CA. 94702

Ms. Paula Gill
Project Manager
U.S. Army Corps of Engineers, S.F. District
1455 Market Street, 17th Floor
San Francisco, CA. 94103-1398

Dr. Stuart Siegel
Wetland and Water Resources
818 Fifth Avenue, Suite 2008
San Rafael, CA. 94901

Melissa Scianni
Enviromental Protection Agency
Region IX
75 Hawthorne Street
WTR – 5
San Francisco, CA. 94105

Ms. Leora Feeney
1330 Eight Street
Alameda, CA. 94501

MAINTENANCE REPORT DISTRIBUTION LIST

Mr. Scott Smithson
Executive Director
S.F. Bay Bird Observatory
524 Valley Way
Milpitas, CA. 95035

Ms. Brenda Buxton
CA State Coastal Conservancy
1330 Broadway, Suite 1100
Oakland, CA. 94612

Mr. John Hink
Building & Land
c/o Pacific Gas & Electric
P.O. Box 770000 MC N10A
San Francisco, CA. 94177

Jeff McCreary
Manager of Conservation Programs
Ducks Unlimited, Inc.
3074 Gold Canal Drive
Rancho Cordova, CA 95670

Michael Josselyn, Ph.D.
Wetlands Research, Inc.
2169-G East Francisco Boulevard
San Rafael, CA. 94901

Mr. David Lewis
Executive Director
Save the Bay
350 Frank Ogawa Plaza, Suite 900
Oakland, CA. 94612

Mrs. Florence LaRiviere
Citizens Committee to Complete the Refuge
453 Tennessee Lane
Palo Alto, CA. 94306

Mr. John R. Rusmiser
District Manager
Alameda County Mosquito Abatement
23187 Connecticut Street
Hayward, CA. 94545

Ms. Kirsten Struve
City of San Jose
Environmental Services Department
200 East Santa Clara St. 10th floor
San Jose, CA. 95112

Mr. John Krause
CA Dept. of Fish and Game, Region 3
P7329 Silverado Trail
Yountville, CA. 94558

Lt. Colonel Laurence Farrell
Commander
U.S. Army Corps of Engineers
San Francisco District
1455 Market Street, 17th Floor
San Francisco, CA. 94103-1398

Ms. Barbara Salzman
Marin Audubon Society
48 Ardmere Road
Larkspur, CA. 94939

MAINTENANCE REPORT DISTRIBUTION LIST

San Francisco Bay Joint Venture
Coastal Conservancy
1330 Broadway, Suite 1100
Oakland, CA. 94612

Melisa Helton
Field Supervisor
U.S. Fish and Wildlife Service
2800 Cottage Way, Room E. 1803
Sacramento, CA. 95825

Mr. Pat Mapelli.
Manager, Real Property
Cargill Salt
7220 Central Avenue
Newark, CA. 94560-4205

Mr. William Travis
Executive Director
S.F. Bay BCDC
50 California Street, Suite 2600
San Francisco, CA. 94111